

INSTRUCTION MANUAL

DIVER

DIVER II

NAUTAGE

Thank you.

We wanted to personally thank you for your recent purchase of one of our watches.

We are thrilled that you have decided to add one of our time-pieces to your collection, and we appreciate your support.

At NAUTAGE, we take great pride in crafting watches that are not only stylish but also reliable and accurate tools.

Our automatic watches is a testament to our commitment to excellence, and we are confident that it will serve you well for many years to come.

We appreciate your trust in our brand and we are honored to have earned your business. We hope that you will continue to enjoy your NAUTAGE watch and that it will bring you joy every time you wear it.

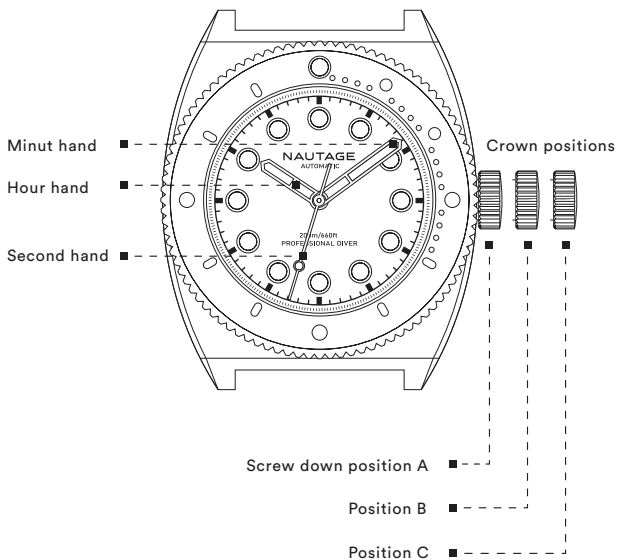
Once again, thank you for your purchase and for being a part of the NAUTAGE community.

Yours sincerely,

Allan & Christian

A handwritten signature in black ink that reads "the Nautage team". The word "the" is in a smaller, lowercase script, while "Nautage" is written in a larger, more prominent cursive script, and "team" is in a smaller, lowercase script.

Display and crown.



The crown has a total of 3 positions:

A: Locked, watertight position.

B: Unscrewed position for winding the movement.

C: Adjusting the time position.

Starting the watch.

When receiving the watch you will need to manually wind it up.

Unscrew the crown from position (A) until it pops out of the thread into position (B).

Now turn the crown clockwise 40 times.

Then pull out the crown to position (C), and press it back in to position (B). Now the watch starts ticking.

Adjusting the time.

To set the time, unscrew the crown from position (A) and then pull out the crown gently to position (C).

Then, turn the crown until the correct time is set.

When you set the time correctly, push the crown back to position (B) and screw it down to seal the crown into position (A).

WARNING:

When the crown is unscrewed from position (A), the watch is not watertight.

Before exposing the watch to water, always ensure that the screw-down crown is tightly screwed into position (A).

Specifications.

Case size

41 mm diameter. 49 mm lug-to-lug.

12 mm total case height.

22 mm lug width.

Crystal

Sapphire crystal front and back.

Luminous

Inverted dial – BGW9 Swiss Super-LumiNova®

Black dial – C3 super Swiss Super-LumiNova®

Bezel

120 click uni-directional DLC coated.

Movement

Miyota 9039 Premium - automatic movement.

28,800 beats per hour.

Power-reserve up to 42 hours

Accuracy: -10~+30 sec per day.

Case

316L surgical grade bead blasted stainless steel.

Water-resistance

20 ATM / 660 ft / 200 m

Crown

Screw-in.

Strap material

Rubber strap: Vulcanized NBR rubber.

Buckle: 316L bead blasted stainless steel.

Design

Designed and developed in Denmark by Nautage.

The movement.

The Miyota 9039 is a mechanical movement produced by the Citizen Watch Co in Japan. It is a high-quality automatic movement that is commonly used in luxury watches. The movement has a diameter of 11.5 lignes (25.6 mm) and a thickness of 3.9 mm.

The Miyota 9039 is self-winding and does not require a battery. The movement works by utilizing the energy from the natural motion of the wearer's wrist to power the watch.

The movement has a rotor that rotates when the watch is worn, and this motion winds the mainspring, which stores the energy that powers the watch. The stored energy is then released in a regulated manner through a series of gears, levers, and springs to drive the movement's hands.

Inside the Miyota 9039, there are 24 jewels, which reduce friction between the various mechanical components and ensure smooth operation.

The movement has a frequency of 28,800 vibrations per hour, which means that it ticks 8 times per second. This high frequency provides accurate timekeeping and a smooth sweep of the second hand.

Overall, the Miyota 9039 movement is a reliable and accurate choice for watch enthusiasts who appreciate the craftsmanship and precision of mechanical movements. Its automatic winding mechanism and advanced features make it a popular choice for a wide range of high-end watches.

Using the diver's bezel to measure time.

The diver's bezel is a rotatable bezel that can be set to the minute and only be rotated in one direction (counterclockwise) to prevent accidental adjustment.

It has a luminous main marker which can be used in various ways. It can be used to highlight important time periods. Use it, for example, to mark the start of a period of time; the elapsed time can then be read off at a glance at any time.

Each marker / step on the bezel represents 5 minutes.

WARNING:

Do not attempt to rotate the bezel clockwise, since this will cause permanent damage to the bezel.

Magnetism

If the watch is magnetized, the most prominent sign is usually that the watch runs too fast, usually more than a minute per day. Magnetism usually happens, if the watch has been stored next to a cellphone, a loudspeaker, or anything with a powerful magnet. It can also happen when the watch is scanned in an airport metal detector.

To check whether or not your watch is magnetized, you can use the app LEPSI (iPhone) or Physics Toolbox Magnetometer (Android) and follow the guide in the app.

Alternatively, you can hold a compass near the watch, and check if the needle is attracted to the watch.

If the watch is magnetized, you will need to demagnetize it using a demagnetizer or take it to your local watchmaker, who can assist with demagnetizing your watch.

Water resistance.

The static compressive stress of your watch is given in bar. The “Diver” can withstand water pressure up to 20 bar/660 ft/200m.

Each and every one of our watches is tested for water resistance.

However, in everyday use it is important to note that seals can suffer from wear and ageing over time due to a wide range of factors which arise when wearing a wristwatch. We therefore recommend having the water resistance checked at least once a year.

To ensure your watch retains its water resistance for as long as possible, rinse it with tap water if it comes into contact with seawater, chemicals or the like.

Continual mechanical stress in the form of shocks and vibrations can also not only reduce water resistance, but also increase wear and tear of the movement. Care should therefore be taken to protect your watch from unnecessary impacts.

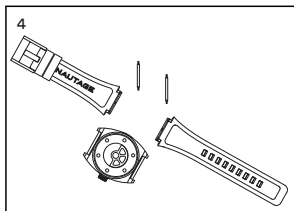
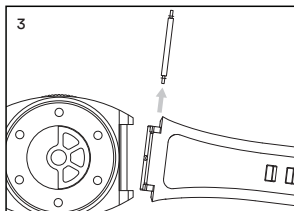
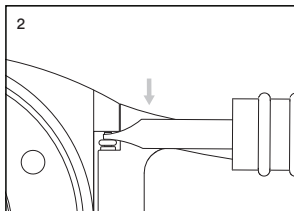
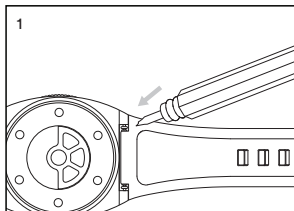
WARNING:

Do not use the watch in conditions where the temperature is very changeable. For example, in a sauna, steam bath, or similar, or in extremely cold weather, since this can lead to negative pressure and result in condensation. We do not cover returns, repairs, complaints, or damage caused by the use of the watch in water, saunas, steam baths, and similar.

Changing the strap.

Changing a watch strap with a springbar tool is a simple process that can be done in a few steps:

1. First, place the watch face down on a soft surface to avoid scratching it.
2. Locate the springbars on either side of the watch strap where it meets the watch case.
3. Insert the pointed end of the springbar tool into the small gap between the strap and the watch case, then use the tool to push the springbar inward.
4. While holding the springbar inward, gently pull on the strap to release it from the watch case.
5. Repeat the same process on the other side of the watch to completely remove the strap.
6. To attach the new strap, simply insert one end of the springbar into the hole on the watch case, then use the springbar tool to compress the springbar inward while guiding the strap into place.
7. Once the first end is securely attached, repeat the same process on the other side of the watch to attach the second end of the strap.
8. Finally, double-check that both ends of the new strap are securely attached to the watch case before wearing your watch again.



In our webshop, you can also buy a wide range of rubber straps in different colors as well as stainless steel bands. They are custom made for our watches to make a perfect fit and integrated look.

See more at www.nautage.com

It is also possible to use 3rd-party straps on the watch.
The lug width is 22 mm

Warranty.

We provide a 24-month warranty under the Danish Sale of Goods Act.

If you have a complaint, contact us at info@nautage.com with a description of the issue and your order number.

The warranty applies to manufacturing defects in the watch. Please note that the following items are not covered by the warranty:

- Wear and tear of the strap/bracelet (utility item).
- Defects/damage due to drops, blows, dents, crushing, etc.
- Damaged/bent crown.
- Magnetization.
- Damage due to repair/modifications carried out by a party other than Nautage.
- Damage due to the use of the watch in water.
- Condensation.
- Natural changes due to normal wear and tear (minor scratches, patination/wear to the strap).
- Defects or damage caused by fire or other natural disasters, such as earthquakes.

Servicing.

We recommend that you get your local watchmaker to service your Nautage watch every 3 years from the date of purchase.

Questions?

You are always welcome to contact us at **info@nautage.com**

We strive to respond to all inquiries within 1–2 business days.

Produced by:

Nautage ApS - Denmark.
Hellerupvej 46
DK-2900 Hellerup
Denmark

VAT DK-41096551
www.nautage.com

© Copyright - Nautage ApS

